

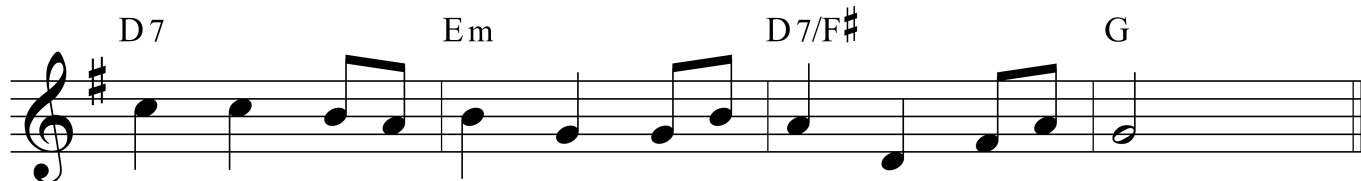
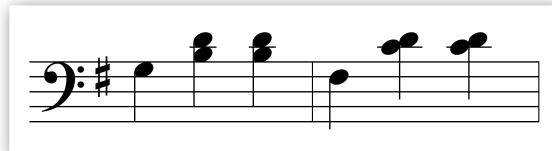
# Clementine

How many sharps are in the key signatures of this piece? \_\_\_\_\_

What key is this piece in? \_\_\_\_\_

Play the correct chord progression.

Try to vary your left hand accompaniment in this song. Try a waltz pattern:



## Bonus byte:

If played correctly, you'll notice that the bass notes of the last line move up by step. This makes it easier for your hands to find the chords.

